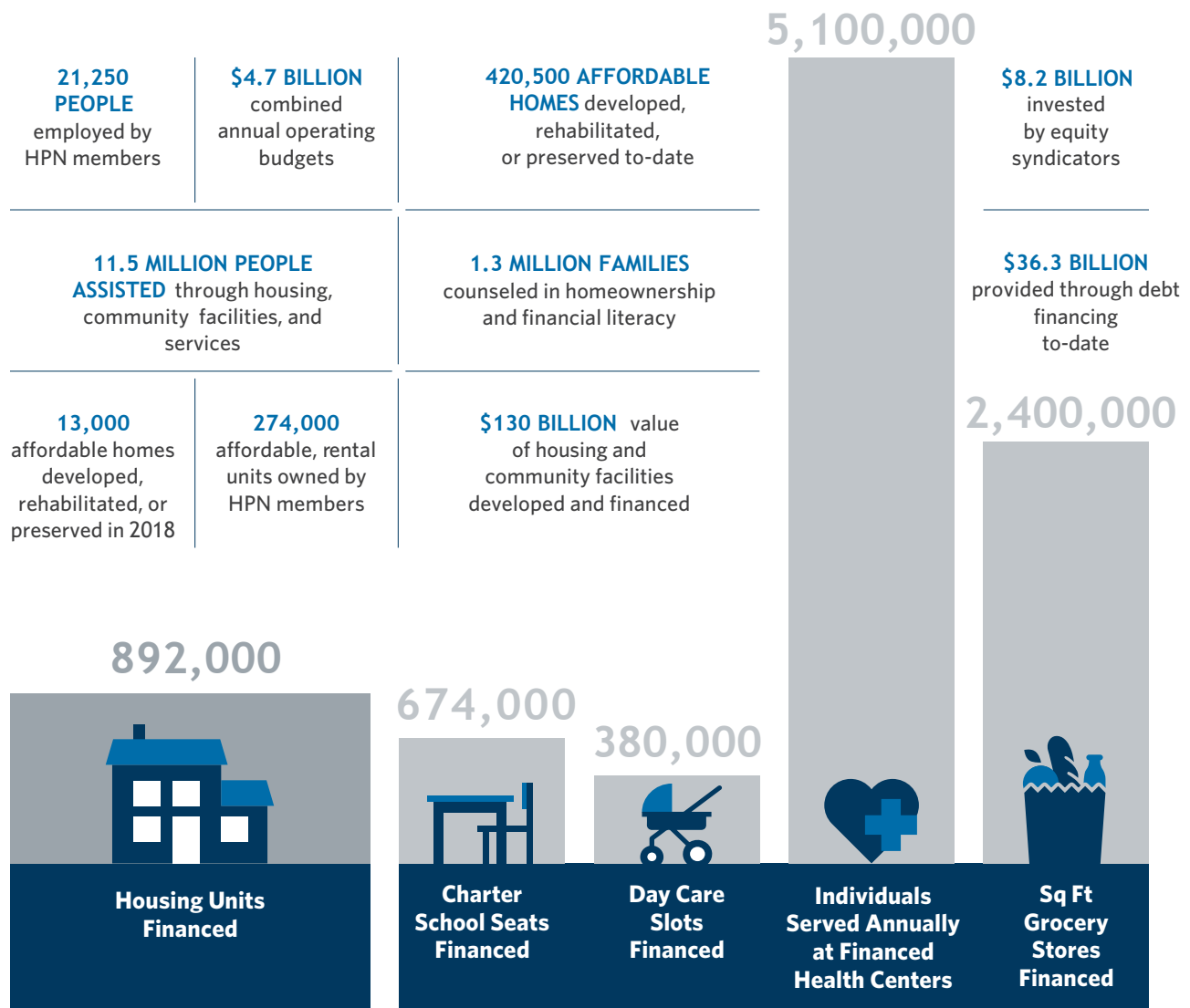


# Membership Profile

The **Housing Partnership Network** is a business collaborative of 93 of the nation's leading housing and community development nonprofits. These organizations share a common mission to provide affordable housing and sustainable communities for low- and moderate-income households. Members collaborate through peer exchanges that advance best practices in the field, and come together to create innovative, collectively-owned businesses that enhance their operations and impact. On Capitol Hill, HPN advocates for federal housing policies that enhance the long-term sustainability and impact of housing and community development nonprofits.

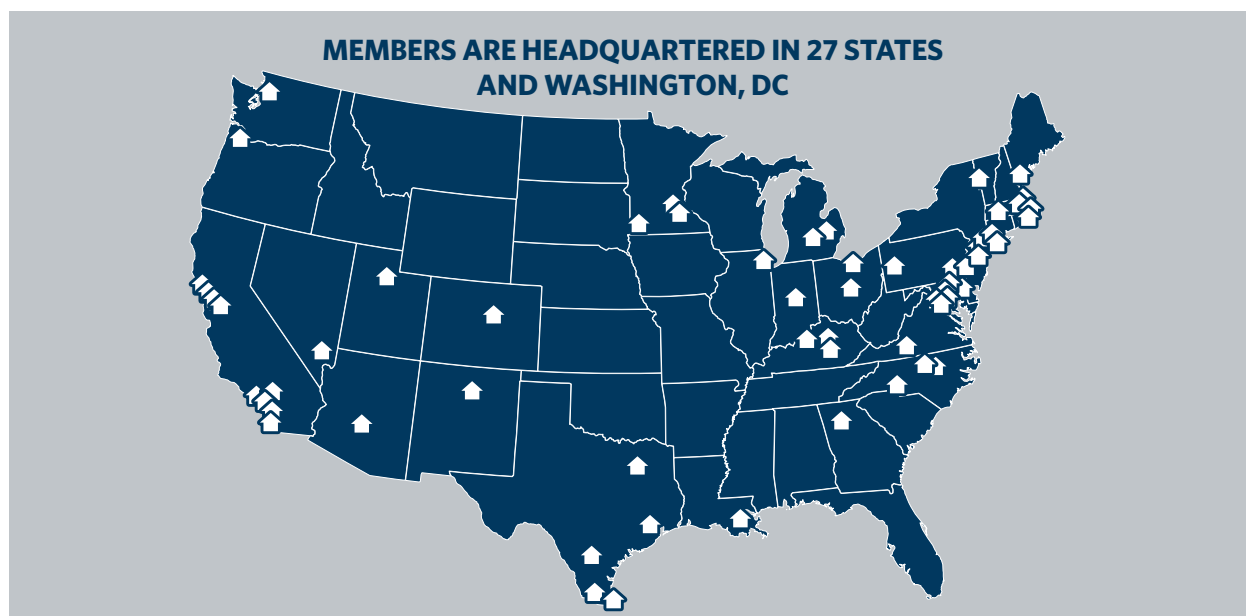
## IMPACT OF HPN MEMBERS



*\*Member impact estimated based on member reported data and other public information*

The infographic is divided into three vertical columns, each representing a different professional category. Each column has a header icon, a total count, a category title, and a list of sub-specialties with their respective counts. The counts are color-coded: blue for the first column, orange for the second, and green for the third.

Category	Total Members	Sub-Specialty	Count
Members Develop Real Estate	77	Rental developers	73
		Homeownership/for-sale developers	34
		Mixed-income developers	65
		Mixed-use developers	57
		Commercial developers	36
Members Are Lenders and Investors	46	Commercial/development lenders	36
		Consumer mortgage lenders	24
		Equity syndicators	5
		Certified CDFIs	36
		Aeris Rated FHLB Members	19
Members Are Housing Counselors	35	Pre-purchase counseling & education	32
		Foreclosure prevention	24
		Post-purchase counseling & education	32
		Renter counseling	20
		Homelessness prevention	15



**75**  
**SERVE FAMILIES WITH CHILDREN**

**66**  
**SERVE SENIORS**

**57**  
**SERVE PERSONS WITH SPECIAL NEEDS**  
*(formerly homeless or disabled persons)*