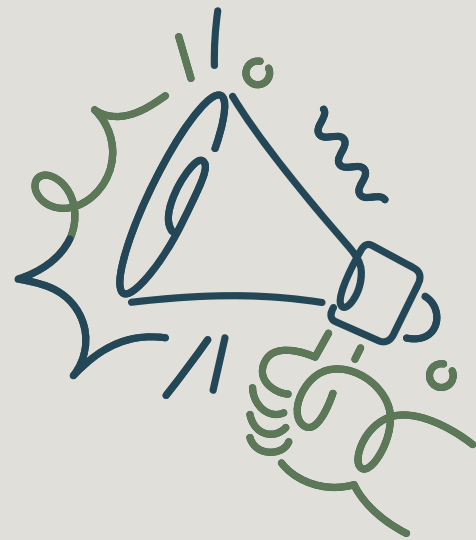


Please join us for the...

HPN Member Compensation + Benefits Study 2024



Salary Trends

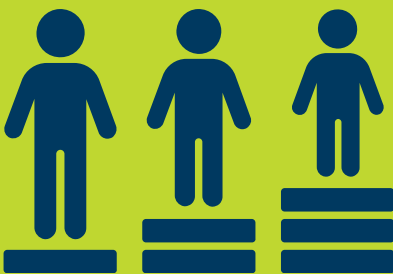
Understand how your salaries and pay practices compare against other housing and operational roles at HPN peer organizations.

Benefits



Detailed reporting on benefits trends and practices - health, retirement, time off, and other fringe.

Pay Equity & Living Wage



Custom analysis of pay equity, living wage, and housing affordability trends across the HPN member cohort + best practices for employee retention.

Timeline

- **April 26th:** Last day to sign up for study
- **May/June:** Data Collection Window
- **September:** Reports + Salary Tools Distributed
- **Oct-Nov:** 1:1 meetings with Thruline to discuss reports & take action

2024 Study Pricing: \$6,500 per participating HPN member organization

HPN's 2024 study is presented in partnership with Thruline Compensation Consulting. Please reach out with any questions. We hope you'll join us!

Ben Crosby (Thruline) -
ben@thrulinecomp.com

Sherry Burton (HPN) -
burton@housingpartnership.net